

CUSTOM DRAPERY HARDWARE

art+architecture

THE LOOK+BOOK

J.L. Anthony

about J.L. Anthony

For 30 years, designers, architects and buyers have sought out J.L. Anthony for the finest custom designs and drapery hardware innovations ...

J.L. Anthony products are installed in many of America's finest homes. Not surprisingly, they're also found in embassies, palaces, government buildings, and luxury hotels all over the world. That wasn't always the case, in fact, until 1985, when Lancaster & Associates started the "J.L. Anthony" line with its sophisticated model for specifying, producing and installing custom hardware designs, the entire drapery hardware niche was a fragmented patchwork of specialists and master woodworkers.



A CHANGING MARKETPLACE

Through the 1990's (and ever since) the market for custom draperies and hardware has evolved; requiring broader design offerings and a deeper collection of finishes. The JLA response has been substantial:

- JLA sources only sustainably-grown domestic poplar for multiple pole designs in varying diameters
- The finial collection has blossomed to accommodate both traditional and modern palettes
- The growing array of available finishes accommodates every design request from stock offerings through custom specifications
- JLA has become the destination resource for automated draperies and shades ... a distinction we maintain as installations become ever-more complex
- Our finely-tuned traversing systems operate flawlessly, marrying beauty with consistently-high performance
- Our U.S. manufacturing facility is projected to handle increased production through 2020
- The newly-renovated Dallas showroom provides meeting suites as well as specifying and materials support consultations to designer and architect clients
- Our expanding dealer network services interior designers, architects and institutional buyers
- JLA also has dedicated client service and installation teams available for jobs large and small

BECOMING AN ALWAYS-ON PRESENCE

As online and mobile channels have evolved, J.L. Anthony has continually upgraded its product knowledge base through **JLAnthony.com**. We also provide designers, architects and buyers a proprietary set of tools for specifying work and developing estimates via our to-the-trade-only **JLADesignerStudio.com**.

Our people also engage daily through social media designer and luxury-goods communities to share updates, trends and recent Client installations. We also share projects and profiles of our Client

Designers and Architects via the JLA DesignerShowcase stories.

YOUR PARTNER IN LUXURY DESIGN

A lot has been achieved since *Interior Design Magazine* named J.L. Anthony as its "Best New Product," and much more is expected as new finial designs and finishes are revealed in 2016. As you pursue your luxe projects going forward, we hope to be of service. Please utilize this Look+Book for your creative endeavors, and call or email us with any inquiries.



CONTENTS

OUR STORY

PAGE 2

COMPONENTS



FINIALS

PAGES 4-7

BRACKETS

PAGE 8

RINGS & TIEBACKS

PAGE 8

POLES

PAGE 9

SYSTEMS



MOTORIZED SYSTEMS

PAGE 10

TRAVERSING SYSTEMS

PAGE 11

SPECIALTY APPLICATIONS

PAGE 11

FINISHES



FINISHES

PAGES 12 - 18

CUSTOM FINISHES

PAGE 19



finials

BORDEAUX - 01



FINISH: DISTRESSED PECAN W/CUSTOM TRIM

MT. VERNON - 02



FINISH: BLACK MAPLE

ESSEX - 03



FINISH: CUSTOM MILKWASH

LEXINGTON - 04



FINISH: PIANO BLACK & CORDOVAN MAHOGANY

PLYMOUTH - 05



FINISH: LIGHT CHERRY

CAP - 06



FINISH: GOATSKIN

THIN CAP - 06S



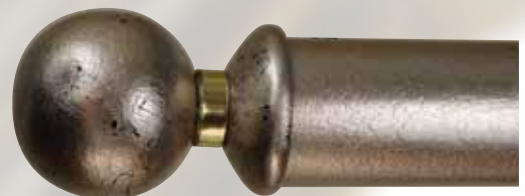
FINISH: CUSTOM LEATHER UPHOLSTERED

ABBOTT - 07



FINISH: DARK BRONZE

STRATFORD - 08



FINISH: ARGENT

PRESCOTT - 14



FINISH: DISTRESSED PECAN

GILLON - 09



FINISH: FAUX TORTOISE SHELL

MIRAMAR - 15



FINISH: FRENCH PINE

LORRAINE - 10



FINISH: CUSTOM GOLD

BEVERLY - 16



FINISH: EBONY

ARMSTRONG - 11



FINISH: CHURCH STREET GOLD

BELFORT - 18



FINISH: DARK BRONZE & CUSTOM STAINLESS STEEL

NORMANDY - 12



FINISH: LIGHT WALNUT

DREXEL - 19



FINISH: ARGENT W/ CUSTOM TRIM

finials

LIVINGSTON - 23



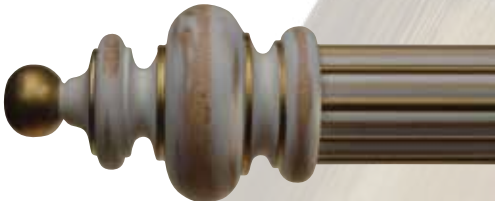
FINISH: ANTIQUE GOLD W/ CUSTOM TRIM

TULIP - 25



FINISH: PROVENCIAL GOLD W/ CUSTOM TRIM

BANNISTER - 26



FINISH: NATURAL MILKWASH W/ CUSTOM GOLD TRIM

SPINDLE - 27



FINISH: DARK PICKLED W/ CUSTOM SILVER TRIM

CHIPPENDALE - 28



FINISH: ROSE MILKWASH W/ CUSTOM TRIM

URN - 29



FINISH: HICKORY W/ CUSTOM TRIM

RUSSIAN - 30



FINISH: TRAVERTINE W/ SILVER TRIM

LOUIS - 31



FINISH: HEIRLOOM SILVER

LEAF - 32



FINISH: CUSTOM GOLD LEAF

FLAME - 33



FINISH: CORDOVAN MAHOGANY

NAPOLEAN - 35



FINISH: TARNISHED SILVER W/ CUSTOM TRIM

CANTEBURY - 36



FINISH: PIANO BLACK & TARNISHED SILVER

ACANTHUS - 37



FINISH: ANTIQUE GOLD & DISTRESSED PECAN

BELCLAIRE - 38



FINISH: BLACK MAPLE W/ COPPER TRIM

WURFEL - 39



FINISH: PIANO BLACK W/ GOLD TRIM

SPHARE - 40



FINISH: STAINLESS STEEL W/ BLACK TRIM

KEGEL - 41



FINISH: BLACK NICKEL

ZYLINDER - 42



FINISH: PARCHMENT W/ CUSTOM TRIM

brackets, rings & tiebacks

Decorative Brackets – A fabulous finishing touch to our traversing and non-traversing poles, brackets are not required for installation (Full Round Poles excepted), and are available in any finish. On traversing poles, the traversing drapery fits in between decorative brackets located on the extreme ends next to the finials. Allowance must be made for the additional thickness of the brackets. Standard return lengths are for 4" & 7" drapery returns. Custom projection and returns length are available on request.

Wooden Rings – Rings complete both stationary and traversing applications. Full Round rings are recommended for non-traversing poles, and are not intended to move easily on the pole. Concealed brackets prevent movement as well. Traversing rings are ideal when the intention is to open & close the drapery. These rings are on a snap-in glider for easy installation and operation. Traversing rings applications include a master carrier set-up that provides for a 3.5" overlap. These rings can be adapted to most motorized systems. NOTE: Traversing rings are not available on any curved pole, manual or motorized.

Tieback holders – Our four styles can be specified in any of the more than 50 finishes, or they can be custom painted to match or complement your design. All of the tieback holders can be ordered with either a 4" or 6" projection stem and base. The brass finished metal bases are easily secured to the wall surface.

PLAIN
SINGLE RETURN



PLAIN
DOUBLE RETURN



FIERRO
SINGLE RETURN



FIERRO
DOUBLE RETURN



END SOCKET



EURO CUP
SINGLE RETURN



EURO CUP
DOUBLE RETURN



SMOOTH RING



FLUTED RING



SMOOTH
TRAVERSING RING



FLUTED
TRAVERSING RING



DISCUS - 301



FINISH: DARK BRONZE

FLEUR DE LIS - 302



FINISH: HEIRLOOM SILVER

NOUVEAUX - 303



FINISH: MOSS

HERITAGE - 304



FINISH: ROSEWOOD W/ CUSTOM BLACK TRIM

poles

With three diameters and five designs, there is an answer for any interior. All poles are meticulously cut and assembled to customers' exact specifications.

Poles come in three styles for specific applications:

- **Full Round** – The classic style. Requires purchasing separate brackets. Recommended for decorative use only.
- **Non-Traversing** – A J.L. Anthony exclusive. Allows for placement of brackets anywhere along the back side of the pole. The concealed brackets, included with the pole are heavy-duty and are finished to match the finish on the pole.
- **Traversing** – The wooden fascia hides the heavy-duty traversing system. The aluminum track is powder coated to coordinate with the pole's finish. Hand drawn with batons, cord drawn and motorized options available.

Poles are available in one piece up to 16 ft. Any pole longer than 16 ft. will be spliced. Splices are a butt joint and will be located in the center of the pole unless otherwise specified on the order.

All of the J.L. Anthony poles are made of Poplar, an easily renewable wood source. All wood is sustainably grown in the United States and milled in a local facility close to the J.L. Anthony factory in Dallas, Texas.

JLA poles come in 2", 2 1/4" and 3" diameters to perfectly accentuate your window designs.

2"
DIAMETER

2 1/4"
DIAMETER

3"
DIAMETER



motorized systems

Today's smart homes are seeing automation and connectivity advances at breathtaking rates. And as lights, thermostats, audio/video and safety systems now respond to wall switches, remote controls and tablet or smart phone/watch apps, **we are most excited by the developments in drapery hardware.**

30 years ago, J.L. Anthony was a pioneer in adapting our custom hardware to early motorized systems, and that leadership continues today as we bring our clients integrated luxury design solutions for residential and commercial installations. J.L. Anthony offers motors, switches, software and hardware interfaces from all the best sources, including **Somfy, Lutron, BTX, BÜSCHE, and Crestron.**

No matter how challenging the space, JLA's specialty-coated traversing hardware allows draperies to effortlessly glide through curves, arches, bays and lengthy spans. **Add to those high-efficiency tracks our stunning poles and finials dressed in our standard and custom finishes and you have interior design interpreted as a moving art form.**

Our client service consultants will work with your contractors, electricians, audio/video companies and drapery workrooms to assure that the perfect system is matched to your clients' needs.

Customer-Provided Motorized Tracks – For those who want to supply their own motorized tracks, J.L. Anthony offers a COM program. By having the motor supplier drop-ship the system to our factory, we can meticulously fit the track to our poles, making sure all settings and hardware are ready for easy installation.

The JLA Staff is well-versed in all automation communication protocols including IR, RF, RTS, RS232, Z-Wave, QED and QS. We can work with every motorization provider.

Getting in touch with all the available controls, sensors and apps is simply a matter of submitting a request to your JLA Rep or Dealer. We can help you navigate to the latest technology and coordinate your system for any size installation.



traversing & specialty systems

Traversing Systems When a client draws open their shades and draperies, highly-finished materials and precision components combine to smoothly traverse window openings. Add in automation, and these systems (and their planning) get even more complicated. All of which is why designers rely on JLA's expertise in configuring and manufacturing both manual and automated traversing systems. From the heaviest of draperies and multi-layer treatments to the minimalist tracking of modern design, JLA makes the complex appear simple, assisting in all aspects of planning, installation and maintenance.

Standard Configurations – J.L. Anthony's wide variety of set-ups offers designers a great deal of flexibility. These configurations include:

- **Traversing Pole without Rings**
- **Traversing Pole with Rings**
- **Double Traverse without Rings (Over/Under Setup)**
- **Double Traverse with Rings (Over/Under Setup)**
- **Non-Traversing Pole w/Rings & Traversing Under Drapery**
- **Ceiling Mount Option with Adjustable Bracket**

When the situation calls for a special bracket or special projection, we can meet the need. These same set-ups apply to motorized products as well.

Specialty Applications While standardized traversing systems may not always be applicable for the arches, bays and corners found in high-end residential, it's simply not possible to throw JLA a curve in these applications. Our expertise in these highly-technical designs has lead the industry for decades ... we're the go-to provider for architects and designers making a statement in residential and commercial spaces.

Because this is a multifaceted process, we encourage our designer and architect clients to open a dialogue with us early in the process. We can even assist you in preparing presentation materials. Once designs are approved, our designers and craftsmen utilize your customer supplied measurements and (full-sized, annotated) templates to fabricate both manual and motorized traversing systems. Most any shape can be accommodated. Contact your J.L. Anthony dealer for more information to order curved, bay and arched systems.



JLA's traversing-hardware features extruded aluminum powder-coated tracks, designed to handle sleek modern looks and heavier-weight draperies.

Track specifications:

- **Max length One way draw - 20 ft.**
- **Max length Split draw - 40 ft. (Spliced)**
- **Max weight - 80 lbs.**

Track colors:

- **White**
- **Linen**
- **Bronze**
- **Black**
- **Silver**
- **Gold**

Carriers:

The Dual Channel track can be fitted to accept all popular drapery heading styles:

- **Pinch Pleat carriers with bearing rollers**
- **Ripplefold carriers with wheeled base**
 - 120%
 - 100%
 - 80%
 - 60%
- **Z-Fold**
- **Traversing rings**

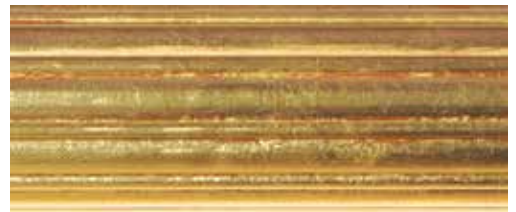


gold collection

The Gold Collection finishes from J.L. Anthony all fulfill the look and feel of real gold. Each component is individually covered with the golden covered metal leaf. Afterwards the hand applied glazing and antiquing of the metal covering gives the warm, rich effect of an aged golden treasure.



ANTIQUED GOLD* (AG)



BRIGHT GOLD LEAF (BGL)



BURNISHED GOLD* (BG)



CHURCH STREET GOLD* (CSG)



PROVENCAL GOLD* (PG)



SUNSET GOLD* (SG)



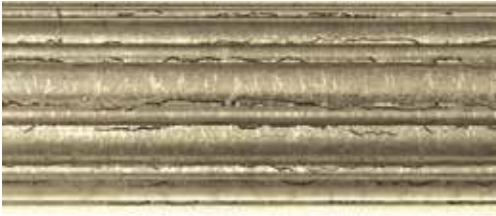
Don't see the finish you need?
The artisans of J.L. Anthony can custom match an object or create a special finish on request.

***A JLA Premium Finish.** See our Pricing Guide for specifications.



silver collection

The J.L. Anthony Silver finishes are individually finished to the customer's specifications, and create a stunning and substantial appeal in any window treatment. Combine the Silver finishes with Gold painted accents to create a truly one-of-a-kind aesthetic.



ARGENT* (AR)



BRIGHT SILVER LEAF (BSL)



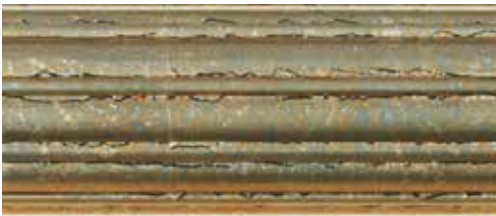
PEWTER* (PE)



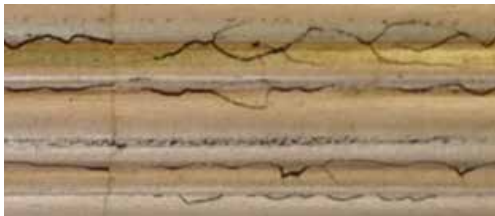
HEIRLOOM SILVER* (HS)



PLATINUM* (PL)



SILVER ROYALE* (SR)



TARNISHED SILVER* (TS)



Don't see the finish you need?
The artisans of J.L. Anthony can custom match an object or create a special finish on request.

***A JLA Premium Finish.** See our Pricing Guide for specifications.



exotic & metallics

Through the magic of the painted finish, the artists of J.L. Anthony can apply texture and color to emulate the true look and feel of an old iron post with Classic Iron, the sleekness of Stainless Steel or the exotic allure of Bamboo. All of these can be applied to any of our J.L. Anthony products.



SAMOA (SM)



TAHITI (TI)



TONGA (TO)



BLACK NICKEL (BN)



CLASSIC IRON* (CLI)



CRACKED ICE (CI)



DARK BRONZE (DB)



DARK COPPER (DC)



STAINLESS STEEL (SS)



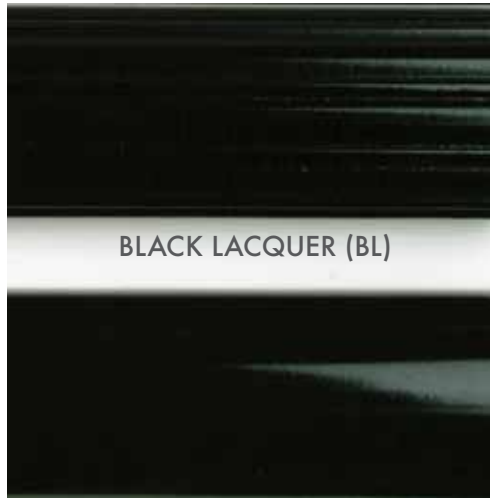
solid, faux & textured

Don't see the finish you need?
The artisans of J.L. Anthony can custom match an object or create a special finish on request.

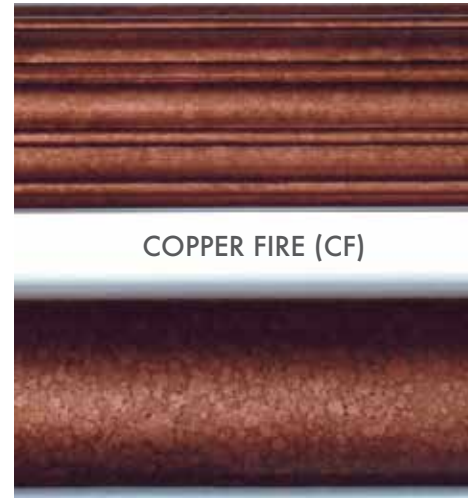
A kaleidoscope of color and tactile beauty, the Faux and Texture finishes of J.L. Anthony include the depth and beauty of Tortoise shell, Burlled Walnut that looks like the real thing, or Travertine with the look of polished marble. All of the finishes in this collection are available in a choice of sheen. Custom coloring is available too.



ARCTIC WHITE (AW)



BLACK LACQUER (BL)



COPPER FIRE (CF)



FAUX BURLED WALNUT (BW)



FAUX TORTOISE SHELL (TOS)



PARCHMENT (PA)



PIANO BLACK (PB)



SAGE (SA)



TRAVERTINE (TR)



wood tones

J.L. Anthony has a Wood Tone finish for every design you can imagine. Hickory, Pecan, Pine and Mahogany are just a few of the many wood finishes available. If the wood color required isn't in the J.L. Anthony selections, contact your dealer to get information about our custom finishing. With our strike-off process you can be assured to get a perfect match every time.



BLACK MAPLE (BMP)



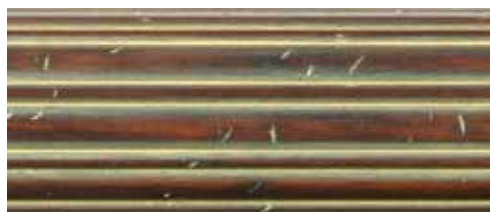
BURNT SIENNA (BS)



CHESTNUT (CH)



CORDOVAN MAHOGANY (CM)



DARK PICKLED (DPI)



DARK WALNUT (DWN)



DISTRESSED PECAN (DP)



DRIFTWOOD (DW)





EBONY (EB)



ENGLISH WAXED PINE (EWP)



FRENCH PINE (FP)



HICKORY (HK)



LIGHT CHERRY (LC)



LIGHT WALNUT (LW)



MOSS (MS)



PICKLED WHITE (PW)

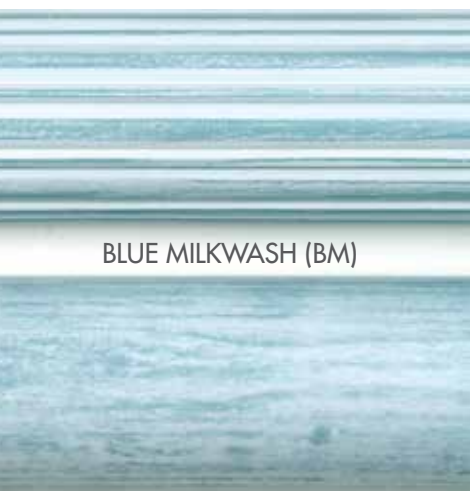


ROSEWOOD (RW)



milkwash collection

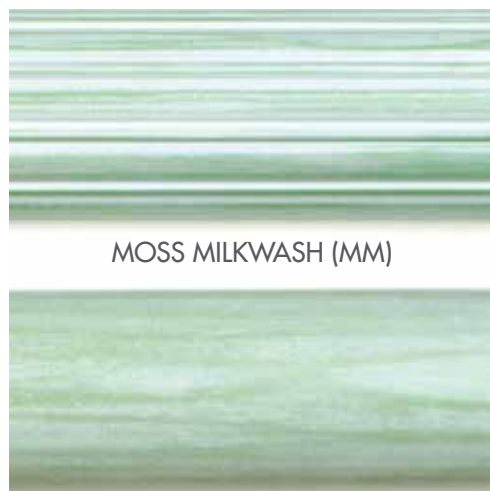
The soft texture and pale hues of the Milkwash colors are a splendid touch to add to that Shabby Chic, Nursery or Kitchen interior. Combine the different colors and add trim to get the perfect match to your fabrics and finishes.



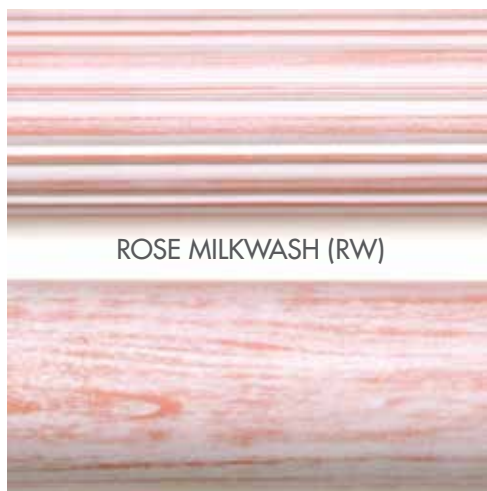
BLUE MILKWASH (BM)



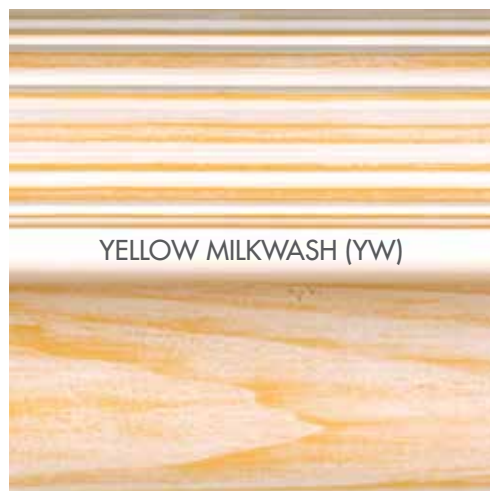
NATURAL MILKWASH (NW)



MOSS MILKWASH (MM)

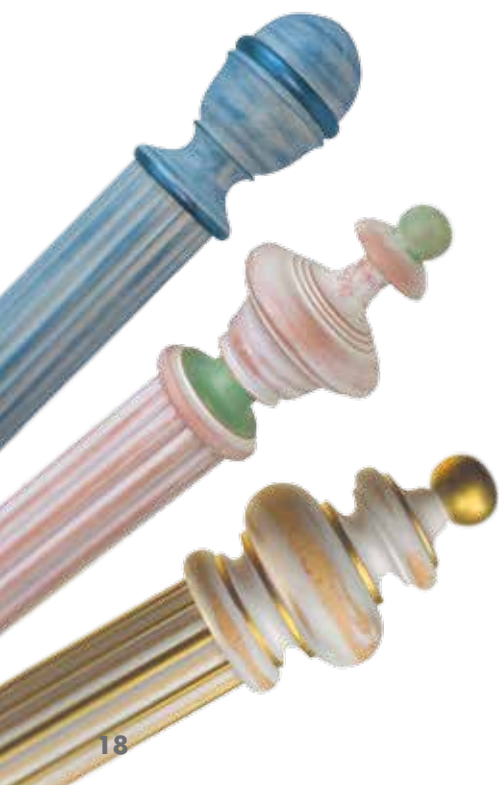


ROSE MILKWASH (RW)



YELLOW MILKWASH (YW)

Don't see the finish you need?
The artisans of J.L. Anthony can custom match an object or create a special finish on request.



upholstered & custom finishes

Upholstered Finishes When a painted finish just won't do, consider having J.L. Anthony cover your poles and finials with your selection of fabric. The artisans in the J.L. Anthony workroom will meticulously attach your fabric, making sure every seam and pattern is matched to perfection. Fabric poles may be covered flat or gathered. Choose from three finial selections for upholstery and embellish them with ruffles and trims of your selection. Leathers and specialty fabrics can be creatively combined with our painted finished finials, rings, and accessories for a one-of-a-kind design statement.

Upholstered Options

J.L. Anthony does not provide fabrics for upholstery. The customer provides their fabric and trim (if applicable). JLA will fabricate and assemble the system so it is ready to install, right out of the box.

Two Styles of Covering poles:

Flat – Smooth Flat fabric. Patterns matched across the pole, if applicable

Shirred – Fabric gathered on the pole.

Three Finial Styles:

Stratford (Ball Finial) – With or without ruffle

Plymouth (Acorn Finial) – With or without ruffle

Cap – no ruffle available

Custom Finishes Even with over 50 finishes in the J.L. Anthony offerings, there are times when a unique finish is required. The expert artists of J.L. Anthony can replicate an existing pattern from your fabric, finish sample, paint chip or most anything to integrate your window treatments with an existing design.

If you're after an original finish, that too is achievable. Working from your supplied drawings or descriptions, we will develop solutions for your review, and provide a strike-off sample. Upon approval the project will be manufactured and finished to specifications. This will truly elevate your designs to create rooms of distinction.

JLA's artisans are as remarkably adept at duplicating paint patterns and combinations as they are creating original finishes for your projects. Contact us to get your samples in the works.





FOR ADDITIONAL INFORMATION



J.L. Anthony

CUSTOM DRAPERY HARDWARE | JLANTHONY.COM | JLADESIGNERSTUDIO.COM